



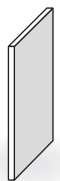
# Sun Control Systems

***etc***  
*east texas canopy, inc.*

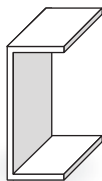


Since **1985**

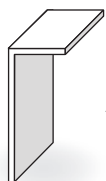
### OUTRIGGER STYLES



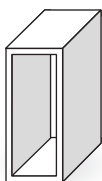
PLATE



CHANNEL

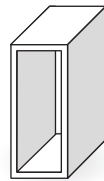


ANGLE

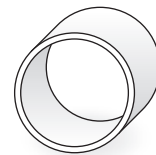


SQUARE

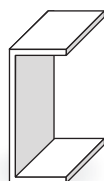
### FASCIA STYLES



SQUARE



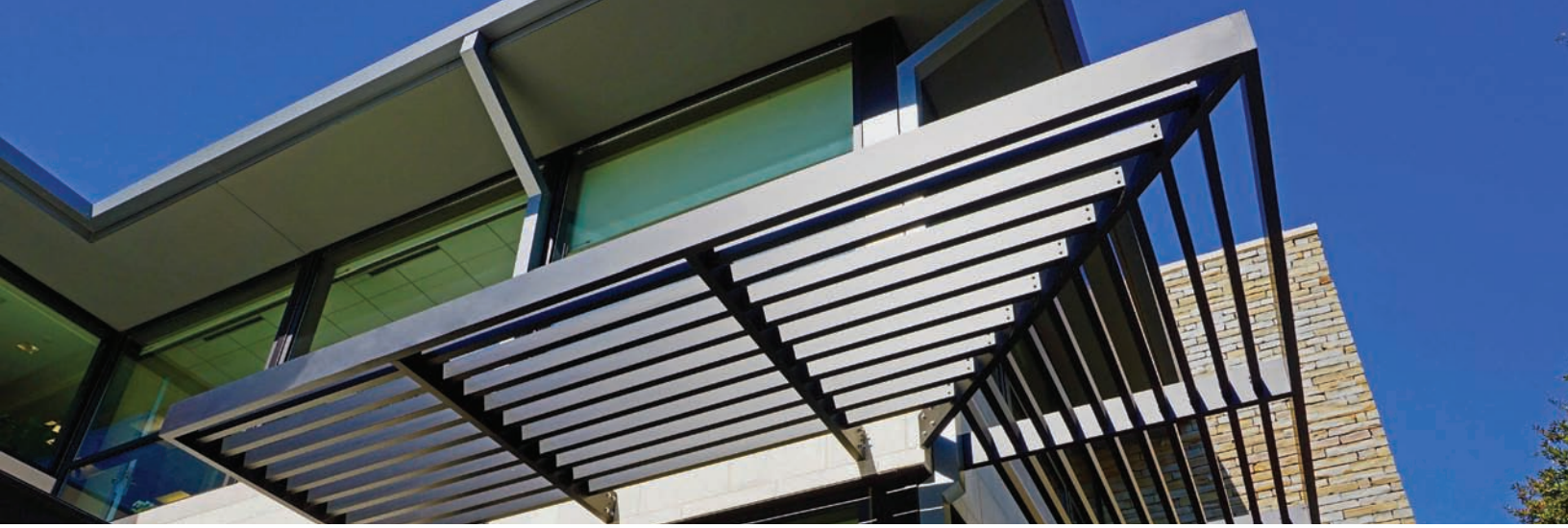
ROUND



CHANNEL



BULLNOSE



## Sun Control Devices

East Texas Canopy has been manufacturing and installing sun control systems since 1985. We are a full service manufacturer that offers engineering and design consulting as well as being a single source supplier. With an almost unlimited variety of design options, East Texas Canopy can work with you to create the exact look you are seeking.



### Model SSA

#### ELLIPTICAL AIRFOIL

Our elliptical airfoils provide a unique look and are available in multiple sizes.



### Model SSB

#### BLADE LOUVER

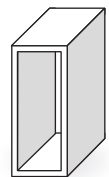
Our louvers provide great sun protection while being aesthetically pleasing.



### Model SSC

#### TUBULAR SHADE SYSTEM

Our tube shades are a simple but effective way to provide the shade you need.



## PART 1: GENERAL

### 1.1 BRIEF DESCRIPTION

Provide a complete pre-engineered sun control system, including labor, with all related work.

### 1.2 SUBMITTALS

#### A. Product Data:

1. Manufacturer's specifications and technical data.
2. Manufacturer's installation instructions.

#### B. Shop Drawings:

1. Provide signed/sealed engineered shop drawings bearing the seal of a registered engineer in the state of Texas.
2. Indicate size, material, and finish. Show location of louvers and installation procedures. Include details of joints, attachments, clearances, spacing, and tilt.

#### C. Samples or color charts showing manufacturer's full range of colors, standard and custom, for Architect's selection.

## PART 2: PRODUCTS

### 2.1 MANUFACTURERS

- A. EAST TEXAS CANOPY, Inc. 11221 CR 2130, Whitehouse, Texas 75791. (800)-816-3822, [www.easttexascanopy.com](http://www.easttexascanopy.com).
- B. Other Manufacturers must have a minimum of five (5) years' experience manufacturing products meeting or exceeding the specifications and comply with Division One regarding substitutions to be considered.
- C. Specifications based on ETC Sun Control Systems by East Texas Canopy, Inc.

### 2.2 MATERIALS

- A. OUTRIGGER (Architect to choose from one of the following):
    1. 8" X 3/8" tapered and sculptured Aluminum Plate, or as shown on drawings.
    2. 2" X 7" X 3/8" tapered and sculptured Extruded Aluminum Angle, or as shown on drawings.
    3. 1.5" X 6" X .125 Extruded Aluminum Channel, or as shown on drawings.
    4. 2" X 8" x .125 Extruded Aluminum Tube, or as shown on drawings.
  5. MATERIAL: T6063 Aluminum.
  6. FINISH (Architect to choose from one of the following):
    - a. Kynar (Color to be selected, submit samples).
    - b. 204R1 satin etched anodizing.
- B. FASCIA (Architect to choose from one of the following):
    1. 1.5" X 6" X .125 Extruded Aluminum Channel, or as shown on drawings.
    2. 2" X 8" x .125 Extruded Aluminum Tube, or as shown on drawings.
    3. 3" O.D. X .125 Extruded Aluminum Tube, or as shown on drawings.
    4. 10" X .050 Aluminum Bullnose Fascia, or as shown on drawings.
  5. MATERIAL: T6063 Aluminum.
  6. FINISH (Architect to choose from one of the following):
    - a. Kynar (Color to be selected, submit samples).
    - b. 201R4 satin etched anodizing.
- C. LOUVERS (Architect to choose from one of the following):
    1. 4" / 6" / 8" X .125 Elliptical Aluminum Airfoils, or as shown on drawings.
    2. 2" X 8" x .125 Extruded Aluminum Tube, or as shown on drawings.
    3. .090 Blade Louver, sized to match outrigger.
  4. FINISH (Architect to choose from one of the following):
    - a. Kynar (Color to be selected, submit samples).
    - b. 201R4 satin etched anodizing.

D. OVERHEAD SUPPORTS: Supply Overhead Support tubes, when applicable, and brackets of adequate size and thickness to support imposed loads.

#### E. FASTENERS:

1. NUTS, BOLTS, WASHERS: Stainless steel in sizes to suit application.

#### F. EMBEDS:

1. East Texas Canopy will not be responsible for the installation of structural steel embeds where necessary. This will be the responsibility of the steel erector, ETC to coordinate.

### 2.3 WARRANTY

Manufacturer shall provide standard limited warranty for sun control system for a period of one (1) year from date of installation, no more than 18 months after shipment from manufacturing plant. When notified in writing from the Owner of a manufacturing defect, manufacturer shall promptly correct deficiencies without cost to the Owner.

## PART 3: INSTALLATION

### 3.1 INSTALLATION

- A. Sun Control Systems shall be installed according to approved plans and shop drawings and the entire structure shall be erected straight, plumb and true in accordance with standard construction procedures. Coordinate installation process with General Contractor.
- B. Upon completion the structure shall be cleaned of any grease, dirt or stains, and all trash removed from the site.



*east texas canopy, inc.*

11221 CR 2130  
WHITEHOUSE, TX 75791  
PH: 1-800-816-3822  
FAX: 903-839-2097

**EASTTEXASCANOPY.COM**